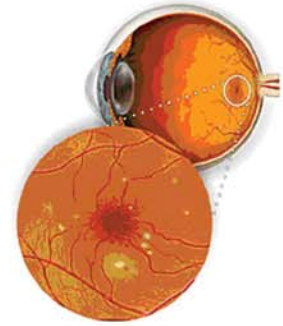


# If You are Diabetic.... All You should Know...



## What is Diabetic Retinopathy?

Retina is the light, sensitive nerve layer at the back of the eye. High blood sugars can damage blood vessels in the retina which may swell and leak. The damage to Retinal vessels leading to swelling and clots in Retina is referred to as Diabetic Retinopathy.

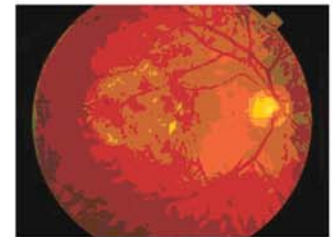
## Signs and Symptoms

In early stages of Diabetic Retinopathy, you might have blurred vision. In the later stages you develop cloudy vision, blind spot or floaters. Never assume that good vision means all is well in Retina!



## For examination:

If you have Diabetes make sure to VISIT US and get a Dilated Retinal Examination.



## It is detected with:

F.F.A → For Angiography of Retina

RETINAL COLOUR PHOTOGRAPHY → with Imagenet

O.C.T → For High resolution cross sectional images of eye/retina

B Scan → To Detect Retinal Detachment and Vitreous hemorrhage



## Treated with:

- Laser Treatment
- Intravitreal Injections
- Vitrectomy

## How to Prevent Vision Loss?

Early detection of Diabetic Retinopathy is the best protection against Loss of Vision. Better control of blood sugar levels slows the progressive of the disease and lowers the risk of vision loss.

